

**LOCAL INFORMATION**  
**RESEARCH SCHOOL "Associative and Non-associative algebras"**  
**August 7-19, 2017**

**Destinations**

[Airport Tolmachevo](#) has two terminals: domestic and international, they are in 5-7 min walk apart from each other.

[Novosibirsk State University](#) is located in a remote district of Novosibirsk called *Akademgorodok*.

Dormitory: [Lyapunova 2](#) (630090 Novosibirsk)

Canteen: [Pirogova str., 6](#)

Lunch stamps are valid in this canteen (2<sup>nd</sup> floor) as well as in the Cafeteria (1<sup>st</sup> floor). Each stamp is RUR 120, and you may pay with cash or card if the amount exceeds RUR 120.

**Local transportation**

We will try to meet as many participants as we can. However, if you do not see our representative (with "Algebra-2017" tab) in the arrival hall, you may reach the location in one of the following ways.

1) Taxi.

In the arrival hall of the airport, you may meet people with black/yellow tabs "Taxi", but it is more safe to apply at a special window (marked "Taxi") located in the arrival hall of the domestic terminal. The fare is to be paid in cash either in the window or directly to the driver. The price is fixed (taxi have no meters), for the trip to Akademgorodok it is about **RUR 1000**.

The trip takes 40-50 min without traffic jams, normally it is about 1.5 hours.

2) Public transport is reasonable to use if you have portable baggage.

- [Bus No 111](#) departs from the domestic terminal (just in front of it) every 30 min. This route operates from 4 am to 22:30 pm, you may use it to reach the central Railway Station [Novosibirsk Glavnyiy](#). The trip takes about 1 hour, the price **RUR 38** is to be paid in cash to the driver when you leave the bus. Large bags should be paid at the same rate. From the Railway Station, you may get on a bus line **No 8** and get off at the final stop [Tsvetnoi Proezd](#), then take a walk in about 20 min to the dormitory. Bus fare is **RUR 19**, it can be paid in cash to the bus staff ("conductor"); bulky luggage subjects extra fare.

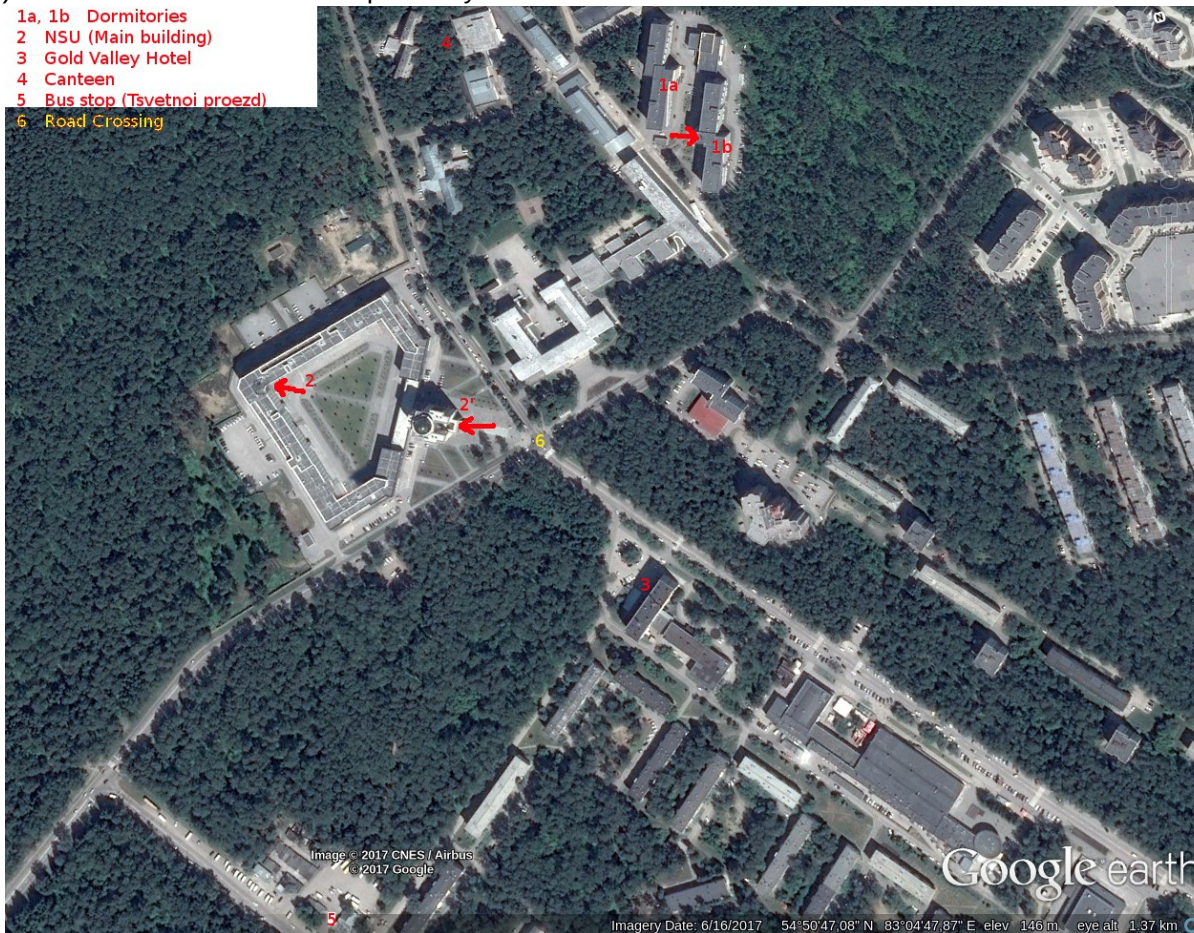
## When you arrive at the dormitory

Participants will stay in Dormitory No 1b (Lyapunova str., 2). Please apply to a security guy with your ID and proceed to your room.

If your stay is covered by CIMPA, this is all you need to do.

If you pay lodging expenses yourself, you should get a paper bill in the administration office located in the dormitory during the office hours. To pay the bill, please visit the cashier located in the 1<sup>st</sup> floor of the Administration building of NSU (2' on the map). The cost is **RUR 700** per day.

- 1a, 1b Dormitories
- 2 NSU (Main building)
- 3 Gold Valley Hotel
- 4 Canteen
- 5 Bus stop (Tsvetnoi proezd)
- 6 Road Crossing



## Meetings

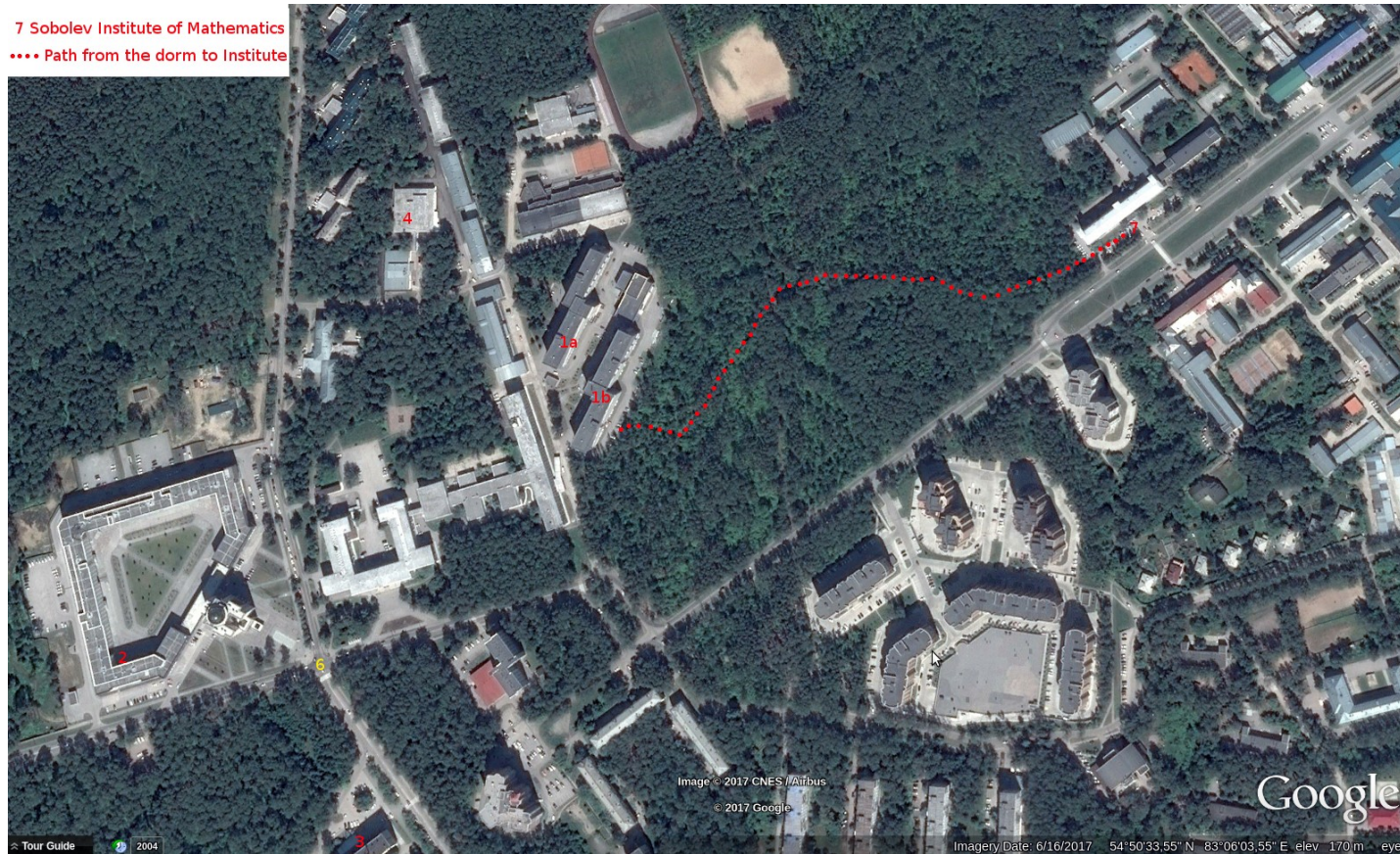
August 7, 8:00-9:00 Registration of participants at Sobolev Institute of Math., Foyer of the Conference Hall

August 7,8,10,11,12: Lectures in Sobolev Institute of Math., room 417

August 14,15,17,18,19: Lectures in Novosibirsk State University, room 5234

To enter NSU buildings, you will need your ID to show it to a security officer.

7 Sobolev Institute of Mathematics  
..... Path from the dorm to Institute



Contacts:

+79133923069 Pavel Kolesnikov (phone, sms)

+79232441789 Maxim Goncharov (phone, sms, whatsapp)

Address of the dormitory in Russian:

**НГУ,  
общежитие 16  
ул. Ляпунова, д. 2**